

Quality ID #181: Elder Maltreatment Screen and Follow-Up Plan**– National Quality Strategy Domain: Patient Safety****– Meaningful Measure Area: Preventive Care****2020 COLLECTION TYPE:****MEDICARE PART B CLAIMS****MEASURE TYPE:**

Process – High Priority

DESCRIPTION:

Percentage of patients aged 65 years and older with a documented elder maltreatment screen using an Elder Maltreatment Screening tool on the date of encounter AND a documented follow-up plan on the date of the positive screen

INSTRUCTIONS:

This measure is to be submitted a minimum of **once per performance period** for patients seen during the performance period. This measure may be submitted by Merit-based Incentive Payment System (MIPS) eligible clinicians who perform the quality actions described in the measure based on the services provided and the measure-specific denominator coding at the time of the qualifying visit. The documented follow up plan must be related to positive elder maltreatment screening, example: "Patient referred for protective services due to positive elder maltreatment screening." Cognitively impaired patients are included in the denominator of this measure and need to be screened using an elder maltreatment screening tool.

Measure Submission Type:

Measure data may be submitted by individual MIPS eligible clinicians using Medicare Part B claims. The listed denominator criteria are used to identify the intended patient population. The numerator quality-data codes included in this specification are used to submit the quality actions allowed by the measure on the claim form(s). All measure-specific coding should be submitted on the claim(s) representing the denominator eligible encounter and selected numerator option.

DENOMINATOR:

All patients aged 65 years and older

DENOMINATOR NOTE: *Signifies that this CPT Category I code is a non-covered service under the Medicare Part B Physician Fee Schedule (PFS). These non-covered services will not be counted in the denominator population for Medicare Part B claims measures.

Denominator Criteria (Eligible Cases):

Patients aged ≥ 65 years on date of encounter

AND

Patient encounter during the performance period (CPT or HCPCS): 90791, 90792, 90832, 90834, 90837, 92002, 92004, 92012, 92014, 92521, 92522, 92523, 92537, 92538, 92540, 92541, 92542, 92544, 92545, 92548, 92550, 92557, 92567, 92568, 92570, 92585, 92588, 92526, 96105, 96116, 96130, 96132, 96136, 96138, 96156, 96158, 97161, 97162, 97163, 97165, 97166, 97167, 97168, 97802, 97803, 99201, 99202, 99203, 99204, 99205, 99212, 99213, 99214, 99215, 99304, 99305, 99306, 99307, 99308, 99309, 99310, 99318, 99324, 99325, 99326, 99327, 99328, 99334, 99335, 99336, 99337, 99341, 99342, 99343, 99344, 99345, 99347, 99348, 99349, 99350, , 99401*, 99402*, 99403*, 99404*, 99483, 99492, G0101, G0102, G0270, G0402, G0438, G0439

WITHOUT**Telehealth Modifier:** GQ, GT, 95, POS 02

NUMERATOR:

Patients with a documented elder maltreatment screen using an Elder Maltreatment Screening tool on the date of the encounter and follow-up plan documented on the date of the positive screen

Definitions:

Screen for Elder Maltreatment – An elder maltreatment screen should include assessment and documentation of one or more of the following components: (1) physical abuse, (2) emotional or psychological abuse, (3) neglect (active or passive), (4) sexual abuse, (5) abandonment, (6) financial or material exploitation and (7) unwarranted control.

Physical Abuse – Infliction of physical injury by punching, beating, kicking, biting, burning, shaking, or other actions that result in harm.

Psychological Abuse – Willful infliction of mental or emotional anguish by threat, humiliation, isolation, or other verbal or nonverbal conduct.

Neglect – Involves attitudes of others or actions caused by others-such as family members, friends, or institutional caregivers-that have an extremely detrimental effect upon well-being.

- **Active** – Behavior that is willful or when the caregiver intentionally withholds care or necessities. The neglect may be motivated by financial gain or reflect interpersonal conflicts.
- **Passive** – Situations where the caregiver is unable to fulfill his or her care giving responsibilities as a result of illness, disability, stress, ignorance, lack of maturity, or lack of resources.

Sexual Abuse – Forcing of undesired sexual behavior by one person upon another against their will who are either competent or unable to fully comprehend and/or give consent. This may also be called molestation.

Elder Abandonment – Desertion of an elderly person by an individual who has assumed responsibility for providing care for an elder, or by a person with physical custody of an elder.

Financial or Material Exploitation – Taking advantage of a person for monetary gain or profit.

Unwarranted Control – Controlling a person's ability to make choices about living situations, household finances, and medical care.

Note: *Self-neglect is a prevalent form of abuse in the elderly population. Screening for self-neglect is not included in this measure. Resources for suspected self-neglect are listed below.*

Follow-Up Plan – Must include a documented report to state or local Adult Protective Services (APS) or the appropriate state agency. Note: **APS does not have jurisdiction in all states to investigate maltreatment of patients in long-term care facilities. In those states where APS does not have jurisdiction, APS may refer the provider to another state agency such as the state facility licensure agency for appropriate reporting.**

Federal reporting: In addition to state requirements, some types of providers are required by federal law to report suspected maltreatment. For example, nursing facilities certified by Medicare and/or Medicaid are required to report suspected maltreatment to the applicable State Survey and Certification Agency.

For state-specific information to report suspected elder maltreatment, including self-neglect, the following resources are available:

- 1) National Adult Protective Services Association - [National Adult Protective Services Association Website---](http://www.napsa-now.org)
(<http://www.napsa-now.org>)
- 2) Eldercare Locator - 1-800-677-1116 [Eldercare Locator Website-](http://www.eldercare.acl.gov/Public/Index.aspx)
(<http://www.eldercare.acl.gov/Public/Index.aspx>)
- 3) National Center on Elder Abuse -- ([National Center on Elder Abuse](http://www.ncea.org))

Disclaimer: The follow-up plan recommendations set forth in this quality measure are not intended to supersede any mandatory state, local or federal reporting requirements.

Not Eligible (Denominator Exception) – A patient is not eligible if one or more of the following reasons is documented:

- Patient refuses to participate and has reasonable decisional capacity for self-protection
- Patient is in an urgent or emergent situation where time is of the essence and to delay treatment would jeopardize the patient's health status

NUMERATOR NOTE: Documentation of an elder maltreatment screening must include identification of the tool used. Examples of screening tools for elder maltreatment include, but are not limited to: Elder Abuse Suspicion Index (EASI), Vulnerability to Abuse Screening Scale (VASS) and Hwalek-Sengstock Elder Abuse Screening Test (H-S/EAST). These tools are psychometrically sound instruments with demonstrated reliability and validity indices.

Numerator Quality-Data Coding Options:

Elder Maltreatment Screen Documented as Positive AND Follow-Up Plan Documented

Performance Met: G8733: Elder maltreatment screen documented as positive AND a follow-up plan is documented

OR

Elder Maltreatment Screen Documented as Negative, Follow-Up Plan Not Required

Performance Met: G8734: Elder maltreatment screen documented as negative, follow-up is not required

OR

Elder Maltreatment Screen not Documented, Patient Not Eligible

Denominator Exception: G8535: Elder maltreatment screen not documented; documentation that patient is not eligible for the elder maltreatment screen at the time of the encounter

OR

Elder Maltreatment Screen Documented as Positive, Follow-Up Plan not Documented, Patient Not Eligible for Follow-Up Plan

Denominator Exception: G8941: Elder maltreatment screen documented as positive, follow-up plan not documented, documentation the patient is not eligible for follow-up plan at the time of the encounter

OR

Elder Maltreatment Screen not Documented, Reason Not Given

Performance Not Met: G8536: No documentation of an elder maltreatment screen, reason not given

OR

Elder Maltreatment Screen Documented as Positive, Follow-Up Plan Not Documented, Reason Not Given

Performance Not Met: G8735: Elder maltreatment screen documented as positive, follow-up plan not documented, reason not given

RATIONALE:

Prevalence rates of elder abuse can vary across populations, geographic areas, and socioeconomic status. Dong (2015) reported black populations demonstrated a higher rate of financial exploitation and psychological abuse (three times and four times respectively) when compared with other populations. Dong's review further indicated the prevalence in North and South America ranges from 10% in cognitively intact to 47.3% in those with dementia.

Mistreatment of older adults represents a widespread problem and elder maltreatment is being increasingly recognized as a global health issue. Screening for potential elder maltreatment provides a method of identifying those who may be at risk and provides an opportunity for interventions to be instituted to decrease further incidence, decrease or prevent harm, and improve the overall quality of life for the elderly victim and their family and/or caregiver(s). As Schofield (2017) discussed, identification and proper interventions would assist in providing support to the elderly patient and their family or caregiver(s). Providing support and early institution of interventions could potentially prevent actual abuse. Elder maltreatment has been largely overlooked and has been a contributing factor to the health and well-being of the elderly population. Healthcare providers should screen patients routinely for abuse and neglect. The process of standardized screening using one or a combination of validated assessment(s) and/or instrument(s) should be done to ensure that signs of abuse or neglect are not overlooked. Tools that aim to detect elder mistreatment in areas such as safety access, cognitive and emotional status, health and functional status, social and financial resources, and

frequency, severity, and intent are recommended to be utilized. Assessment tools contribute to the identification of the factors linked in the development of elder abuse and, therefore, facilitate early interventions to prevent patient mortality or negative patient outcomes. Screening tools for elder abuse have the ability to provide a multidisciplinary objective assessment to detect potential elder abuse (Gallione, et al., 2017).

Rosay and Mulford (2016) reviewed self-report data from the 2010 National Intimate Partner and Sexual Violence Survey (NISVS) to produce weighted estimates for past-year occurrences of abuse. Results from regression analysis showed “more than 1 in 10 adults who are 70 years of age or older (14.0%) have experienced some form of abuse in the past year, with 12.1% experiencing psychological abuse and 1.7% experiencing physical abuse. One in five victims (20.8%) were abused by both intimate and nonintimate partners.” Williams, Davis, and Acierno (2017) discussed “the number of people age 65 and older will triple to well over one billion or 16% of the world’s population by 2050” (p. 45, para. 1).

Several studies noted that elder abuse is under-reported (Dong 2015, Pillemer et al. 2015, Ferrah et al. 2015). Health care providers, according to Dong, represent one of the lowest proportions of those reporting elder maltreatment and considers a failure to report elder abuse as a missed opportunity. Dong further states, “Almost all U.S. states have mandatory reporting legislation requiring healthcare professionals to report reasonable suspicions of elder abuse to APS. Despite these laws, many healthcare professionals are reluctant to report elder abuse because of concerns about lack of time, limited knowledge, fear of offending the individual and family, and sense of inability to make a difference” (p.1687). Hirst et al. (2016) also included other factors related to under-reporting of abuse such as lack of protocols to identify elder abuse, liability concerns, and limited availability of resources.

Elder abuse and neglect victims experience increased rates of hospitalization, increase use of behavioral health services, contributes to the individuals decline, both mentally and physically, and ultimately leads to premature mortality (Yunus, R. M., et al., 2017). Bond and Butler (2013) reported the cost of elder abuse annually is estimated in the tens of billions of dollars and can affect approximately 700,000 to 1.2 million elderly people. A greater use of health resources is associated with elder abuse. Dong (2015) cites emergency room use, hospitalizations, and 30-day readmissions as areas where health care use has been impacted. Costs such as physical and psychological injury, exacerbation of health problems, increased mortality risk, and untimely or early nursing home placement contribute to the overall cost of elder abuse.

CLINICAL RECOMMENDATION STATEMENTS:

Common types of elder mistreatment are physical abuse, psychological or emotional abuse, financial abuse, sexual abuse, and neglect. Prevention, detection, and intervention strategies are essential to guard older adults from abuse and neglect in these areas. The use of standardized tools is supported and provides a common approach to assess older adults for abuse and neglect. Adult Protective Services (APS) is a supported intervention that investigates alleged cases of abuse for older adults (Fearing, et al., 2017).

Risk assessment and mitigation tools should be utilized in the health care setting to examine patients for elder abuse and neglect (EAN). Once EAN is identified, notification of Adult Protective services (APS) is recommended as a best practice. Screening assists the health care professional in better identifying an individual’s areas of needs, categorizing the individual’s risk, and developing a multidisciplinary plan to provide appropriate interventions and support (Moore & Browne, 2017). Care of the elder abuse and neglect victims should be a multidisciplinary approach and include the facilitation of access to supportive services (Yunus, R. M., et al., 2017).

According to evidence, all healthcare providers should screen patients routinely for abuse and neglect. The process of standardized screening using any assessment or instrument should be done to ensure that signs of abuse or neglect are not overlooked (Gallione, et al., 2017).

Strategies for detecting elder mistreatment include using a combination of physical assessment, subjective information, and data gathered from screening instruments. Providers should provide older adults with emergency contact numbers and community resources. When appropriate, referrals to regulatory agencies should be made. From implementing these recommendations, potential benefits include a reduction in harm of elderly patients through appropriate referrals as well as increased use of interventions to promote patient safety. For health care providers, potential benefits of

screening through use of instruments or screening tools such as the Modified Caregiver Strain Index and Geriatric Depression Scale could improve evaluations and patient management that may also develop positive relationships between caregiver and older adult patients (Caceres & Fulmer, 2013).

Whenever possible, clinicians should use judgement regarding the need to seek corroborating information from family members, caregivers, and/or care facility staff for patient reports during elder abuse screening for individuals with cognitive impairment.

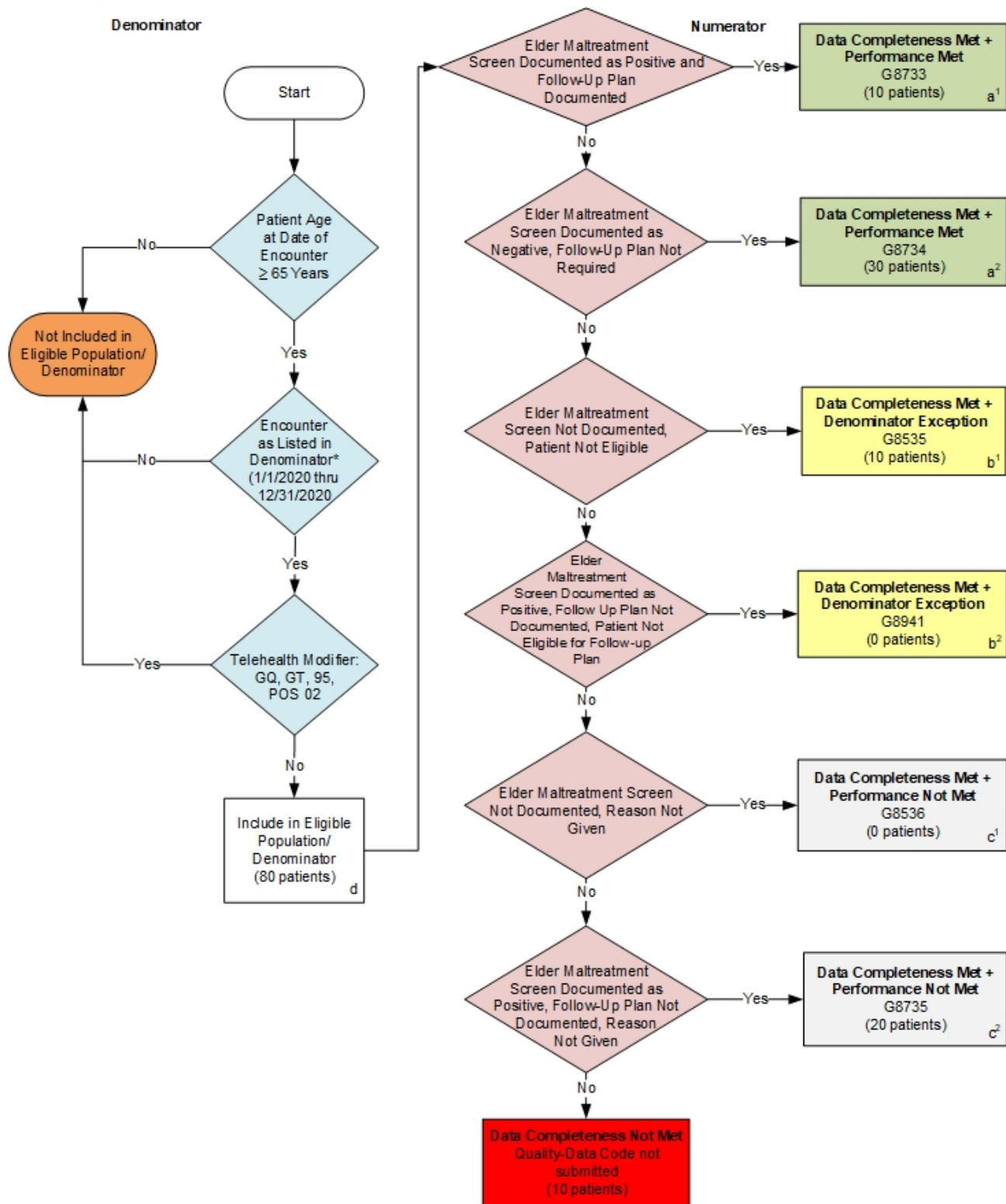
COPYRIGHT:

These measures were developed by Quality Insights Inc. as a special project under the Quality Insights' Medicare Quality Improvement Organization (QIO) contract HHSM-500-2005-PA001C with the Centers for Medicare & Medicaid Services. These measures are in the public domain. Limited proprietary coding is contained in the measure specifications for convenience. Users of the proprietary code sets should obtain all necessary licenses from the owners of these code sets. Mathematica disclaims all liability for use or accuracy of any third-party codes contained in the specifications. The CPT® contained in the Measures specifications is copyright 2004 - 2019 American Medical Association. All Rights Reserved. These performance measures are not clinical guidelines, do not establish a standard of medical care, and have not been tested for all potential applications.

THE MEASURES AND SPECIFICATIONS ARE PROVIDED “AS IS” WITHOUT WARRANTY OF ANY KIND.

2020 Medicare Part B Claims Flow for Quality ID #181: Elder Maltreatment Screen and Follow-Up Plan

Disclaimer: Refer to the measure specification for specific coding and instructions to submit this measure.



SAMPLE CALCULATIONS:

Data Completeness=

$$\frac{\text{Performance Met (a}^1\text{+a}^2\text{=40 patients)} + \text{Denominator Exception (b}^1\text{+b}^2\text{=10 patients)} + \text{Performance Not Met (c}^1\text{+c}^2\text{=20 patients)}}{\text{Eligible Population / Denominator (d=80 patients)}} = \frac{70 \text{ patients}}{80 \text{ patients}} = 87.50\%$$

Performance Rate=

$$\frac{\text{Performance Met (a}^1\text{+a}^2\text{=40 patients)}}{\text{Data Completeness Numerator (70 patients) – Denominator Exception (b}^1\text{+b}^2\text{=10 patients)}} = \frac{40 \text{ patients}}{60 \text{ patients}} = 66.67\%$$

*See the posted measure specification for specific coding and instructions to submit this measure.

NOTE: Submission Frequency: Patient-Process

CPT only copyright 2019 American Medical Association. All rights reserved.
The measure diagrams were developed by CMS as a supplemental resource to be used
in conjunction with the measure specifications. They should not be used alone or as a
substitution for the measure specification.

v4

**2020 Medicare Part B Claims Flow Narrative for Quality ID #181:
Elder Maltreatment Screen and Follow-Up Plan**

Disclaimer: Refer to the measure specification for specific coding and instructions to submit this measure.

1. Start with Denominator
2. Check Patient Age:
 - a. If Patient Age on Date of Encounter is greater than or equal to 65 Years equals No during the performance period, do not include in Eligible Population. Stop Processing.
 - b. If Patient Age on Date of Encounter is greater than or equal to 65 Years equals Yes during the performance period, proceed to check Encounter Performed.
3. Check Encounter Performed:
 - a. If Encounter as Listed in the Denominator equals No, do not include in Eligible Population. Stop Processing.
 - b. If Encounter as Listed in the Denominator equals Yes, check Telehealth Modifier.
4. Check Telehealth Modifier
 - a. If Telehealth Modifier equals Yes, do not include in Eligible Population. Stop Processing.
 - b. If Telehealth Modifier equals No, include in Eligible Population.
5. Denominator Population:
 - a. Denominator Population is all Eligible Patients in the Denominator. Denominator is represented as Denominator in the Sample Calculation listed at the end of this document. Letter d equals 80 patients in the Sample Calculation.
6. Start Numerator
7. Check Elder Maltreatment Screen Documented as Positive and Follow-Up Plan Documented:
 - a. If Elder Maltreatment Screen Documented as Positive and Follow-Up Plan Documented equals Yes, include in Data Completeness Met and Performance Met.
 - b. Data Completeness Met and Performance Met letter is represented as Data Completeness and Performance Rate in the Sample Calculation listed at the end of this document. Letter a¹ equals 10 patients in the Sample Calculation.
 - c. If Elder Maltreatment Screen Documented as Positive and Follow-Up Plan Documented equals No, proceed to check Elder Maltreatment Screen Documented as Negative, Follow-Up Plan Not Required.
8. Check Elder Maltreatment Screen Documented as Negative, Follow-Up Plan Not Required:
 - a. If Elder Maltreatment Screen Documented as Negative, Follow-Up Plan Not Required equals Yes, include in Data Completeness Met and Performance Met.
 - b. Data Completeness Met and Performance Met letter is represented as Data Completeness and Performance Rate in the Sample Calculation listed at the end of this document. Letter a² equals 30 patients in the Sample Calculation.

- c. If Elder Maltreatment Screen Documented as Negative, Follow-Up Plan Not Required equals No, proceed to check Elder Maltreatment Screen Not Documented, Patient Not Eligible.
- 9. Check Elder Maltreatment Screen Not Documented, Patient Not Eligible:
 - a. If Elder Maltreatment Screen Not Documented, Patient Not Eligible equals Yes, include in the Data Completeness Met and Denominator Exception.
 - b. Data Completeness Met and Denominator Exception letter is represented as Data Completeness and Performance Rate in the Sample Calculation listed at the end of this document. Letter b¹ equals 10 patients in the Sample Calculation.
 - c. If Elder Maltreatment Screen Not Documented, Patient Not Eligible equals No, proceed to check Elder Maltreatment Screen Documented as Positive, Follow-Up Plan Not Documented, Patient Not Eligible for Follow-Up Plan.
- 10. Check Elder Maltreatment Screen Documented as Positive, Follow-Up Plan Not Documented, Patient Not Eligible for Follow-Up Plan:
 - a. If Elder Maltreatment Screen Documented as Positive, Follow-Up Plan Not Documented, Patient Not Eligible for Follow-Up Plan equals Yes, include in the Data Completeness Met and Denominator Exception.
 - b. Data Completeness Met and Denominator Exception letter is represented as Data Completeness and Performance Rate in the Sample Calculation listed at the end of this document. Letter b² equals 0 patients in the Sample Calculation.
 - c. If Elder Maltreatment Screen Documented as Positive, Follow-Up Plan Not Documented, Patient Not Eligible for Follow-Up Plan equals No, proceed to check Elder Maltreatment Screen Not Documented, Reason Not Given.
- 11. Check Elder Maltreatment Screen Not Documented, Reason Not Given:
 - a. If Elder Maltreatment Screen Not Documented, Reason Not Given equals Yes, include in Data Completeness Met and Performance Not Met.
 - b. Data Completeness Met and Performance Not Met letter is represented as Data Completeness in the Sample Calculation listed at the end of this document. Letter c¹ equals 0 patients in the Sample Calculation.
 - c. If Elder Maltreatment Screen Not Documented, Reason Not Given equals No, proceed to check Elder Maltreatment Screen Documented as Positive, Follow-Up Plan Not Documented, Reason Not Given.
- 12. Check Elder Maltreatment Screen Documented as Positive, Follow-Up Plan Not Documented, Reason Not Given:
 - a. If Elder Maltreatment Screen Documented as Positive, Follow-Up Plan Not Documented, Reason Not Given equals Yes, include in Data Completeness Met and Performance Not Met.
 - b. Data Completeness Met and Performance Not Met letter is represented as Data Completeness in the Sample Calculation listed at the end of this document. Letter c² equals 20 patients in the Sample Calculation.
 - c. If Elder Maltreatment Screen Documented as Positive, Reason Not Given equals No, proceed to check Data Completeness Not Met.

13. Check Data Completeness Not Met:

- a. If Data Completeness Not Met, the Quality Data Code was not submitted. 10 patients have been subtracted from the Data Completeness Numerator in the Sample Calculation.

SAMPLE CALCULATIONS:

Data Completeness=

$$\frac{\text{Performance Met (a}^1\text{+a}^2\text{=40 patients) + Denominator Exception (b}^1\text{+b}^2\text{=10 patients) + Performance Not Met (c}^1\text{+c}^2\text{=20 patients)}}{\text{Eligible Population / Denominator (d=80 patients)}} = \frac{70 \text{ patients}}{80 \text{ patients}} = 87.50\%$$

Performance Rate=

$$\frac{\text{Performance Met (a}^1\text{+a}^2\text{=40 patients)}}{\text{Data Completeness Numerator (70 patients) – Denominator Exception (b}^1\text{+b}^2\text{=10 patients)}} = \frac{40 \text{ patients}}{60 \text{ patients}} = 66.67\%$$